



01902 836 000

mail@wolvcoll.ac.uk

www.wolverhamptoncollege.ac.uk



08000 730 282

info@stourbridge.ac.uk

www.stourbridge.ac.uk



01922 657053

info@walsallcollege.ac.uk

www.walsallcollege.ac.uk



01384 363 363

student.services@dudleycol.ac.uk

www.dudleycol.ac.uk



Halesowen College

0121 602 7777

info@halesowen.ac.uk

www.halesowen.ac.uk



Sandwell College

0800 622 006

enquiries@sandwell.ac.uk

www.sandwell.ac.uk

colleges in the
black country

BBS Birmingham
Black Country
& Solihull
LIFELONG LEARNING NETWORK

GUIDE TO HIGHER EDUCATION
2009-2010

BCPL endeavour to ensure that all information contained in this leaflet is accurate, we cannot therefore be held responsible for any inaccuracies that may arise.

Design: www.SmithsDesign.com Telephone: 01527 837 873

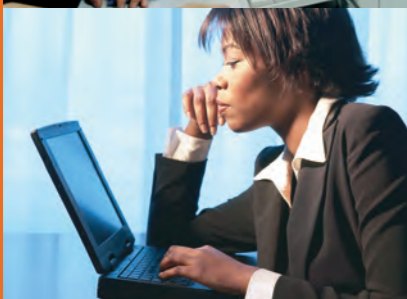


colleges in the
black country

BBS Birmingham
Black Country
& Solihull
LIFELONG LEARNING NETWORK

GUIDE TO HIGHER EDUCATION
2009-2010

Higher Education will help you to achieve your personal aspirations and goals and your personal and career development, giving you higher earnings/earning potential



TO HELP YOU ACHIEVE YOUR PERSONAL ASPIRATIONS, COLLEGES IN THE BLACK COUNTRY WILL OFFER YOU:

- The opportunity to study a wide range of higher education courses at your local college including college based Higher National Certificates, Higher National Diplomas and Professional Qualifications.
- Full-time and part-time courses - including evening courses.
- Courses that are designed to meet your needs.
- The opportunity to progress from one qualification to another.

EXTENSIVE STUDENT SUPPORT

Extensive support mechanisms are in place to ensure that you are able to realise and achieve your full potential.

- You will receive special attention from the guidance and admissions teams in order to ensure that you are fully informed about the course of your choice.
- Following enrolment you will be allocated a course tutor who will maintain regular contact with you during your course of study.
- Tutorial and specialist tutors are available to provide guidance and support in curriculum areas.
- Mentoring / counselling support.

Please contact your local college for more information. (see back page for contact details)

BIRMINGHAM, BLACK COUNTRY AND SOLIHULL LIFELONG LEARNING NETWORK

The Birmingham, Black Country and Solihull network is made up of all the providers of further and higher education courses within the local area. Our role is to develop more progression opportunities for people with vocational qualifications and for those people at work to enter and succeed in higher education. We are working to develop new courses which can be taken part-time and flexibly, which are delivered in new and exciting ways and which are relevant to the workplace.

Additionally, the LLN have now developed a number of progression agreements between colleges and universities for work-based and vocational qualifications in the following areas:

- Construction
- Health, Social Care, Early Years and Education
- Health Science and Medical Technology
- High Technology and Engineering

The agreements help to further progress students in vocational areas into and through Higher Education by:

- Providing clear statements about what is required of learners to be able to progress onto specific undergraduate and postgraduate programmes, including the recognition of prior experience, credits, levels and other qualifications or equivalencies
- Building on existing relationships and compacts between partners institutions

For further information log onto: www.bbcslln.ac.uk

SUBJECT AREA	COURSE TITLE	COLLEGE					
		City of Wolverhampton	Dudley	Halesowen	Sandwell	Stourbridge	Walsall
Arts, Media and Publishing	BA (Honours) - Journalism and Editorial Design	✍					
	Foundation Degree - Broadcast Journalism	✍					
	Foundation Degree - Commercial Video Production	✍					
	Foundation Degree - Music Technology / Performance	✍					
	National Diploma - Music Theatre		✍				
	National Diploma - Pre Degree Foundation Art and Design		✍	✍		✍	✍
	Level 4 - Journalism - NCTJ	✍					
	HND - Fashion		✍				✍
	HND - Fine Arts					✍	✍
	HND - Graphic Design						✍
	HND - Interactive Media						✍
	HND - Interior Design						✍
	HND - Media						✍
	HND - Media (moving images)						✍
	HND - Music Performance						✍
	HND - Music Production						✍
	HND - Performing Arts						✍
	HND - Photography				✍		
	HNC - Fashion						✍
	HNC - Fine Arts					✍	✍
	HNC - Interactive Media						✍
	HNC - Interior Design						✍
	HNC - Graphic Design						✍
	HNC - Media						✍
	HNC - Media (moving images)						✍
	HNC - Music Performance						✍
HNC - Music Production						✍	
Access - to Media Studies - OCNWM		✍					
Education and Training	Foundation Degree - Early Childhood Studies	✍		✍			
	Foundation Degree - Guidance for Learning and Work			✍			
	Foundation Degree - Learning Support	✍		✍			
	Foundation Degree - Teaching Assistants						✍
	Level 5 - Diploma in Teaching in the Lifelong Learning Sector					✍	
	Level 5 - Teaching Certificate in Post Compulsory Education	✍	✍	✍			
	Level 4 - Internal Verifiers Award OCR	✍					
	Certificate - in Education - Stages 1,2 and 3		✍				✍
	Teaching Certificate - C & G 7303 Preparing to Teach Lifelong Learning Sector	✍				✍	✍
	Teaching Certificate - C & G 7304 Preparing to Teach Lifelong Learning Sector	✍				✍	✍
	Access - to English Literature and Creative Writing			✍			
	Access - to Teaching	✍	✍	✍			✍
	Access - to Humanities	✍	✍	✍			✍
	Access - to HE - f/t and p/t	✍	✍	✍		✍	
	Assessors AI Award	✍	✍	✍	✍	✍	✍
Verifiers VI Award	✍	✍	✍	✍	✍	✍	

SUBJECT AREA	COURSE TITLE	COLLEGE					
		City of Wolverhampton	Dudley	Halesowen	Sandwell	Stourbridge	Walsall
Health, Public Sector and Care	Diploma in Public Service and Leadership						
	Foundation Degree - Business Management in Hair and Beauty Therapy						
	Foundation Degree - Community , Health and Social Care						
	Foundation Degree - Consumer Protection						
	Foundation Degree - Integrated Children's and Young People's Services						
	Foundation Degree - Integrated Childcare						
	Foundation Degree - Public Health						
	Foundation Degree - Salon Management						
	Level 4 - Advanced Diploma in Therapeutic Counselling						
	Level 4 - Diploma in Consumer Affairs						
	Level 4 - Diploma in Counselling						
	Level 4 - Health and Social Care - NVQ						
	Level 4 - Leadership and Management for Care Services						
	Level 4 - Leadership and Management for Children's Care, Learning Development - NVQ						
	Level 4 - Leadership and Management Health and Social Care/ Childcare						
	Access - to Healthcare Science						
	Access - to Health Studies and Nursing						
	Access - to Nursing and Health						
Access - to Social Work							
Assessors AI Award in Care							
Science and Maths, Engineering and Manufacturing	Foundation Year Zero - Applied Sciences - Bsc Hons.						
	Foundation Degree - Electrical Power Engineering						
	Foundation Degree - Project Management						
	Foundation Degree - Engineering						
	Level 4 - Occupational Health and Safety Management						
	Level 4 - HNC to HND Conversion - Electrical and Electronic Engineering						
	Level 4 - HNC to HND Conversion - Manufacturing Engineering						
	HND - Electrical / Electronic Engineering						
	HND - Forensic Science						
	HND - Manufacturing Engineering BTEC						
	HND - Manufacturing Engineering BTEC						
	HNC - Electrical / Electronic Engineering						
	HNC - Electronics						
	HNC - Engineering						
	HNC - Manufacturing Engineering BTEC						
	HNC - Mechanical Engineering						
	Access - to Science						
	Leisure, Travel and Tourism	HND - Hospitality and Management					
HND - Sport Coaching Management							
HND - Sport & Exercise Science							

SUBJECT AREA	COURSE TITLE	COLLEGE					
		City of Wolverhampton	Dudley	Halesowen	Sandwell	Stourbridge	Walsall
Construction, Plumbing and the Built Environment	Foundation Degree - Construction						
	Foundation Degree - Construction Project Management						
	HND - Construction (Building Studies) BTEC						
	HND - Construction - p/t						
	HNC - Building Services (Electrical Installation) - p/t						
	HNC - Civil Engineering - p/t day release						
	HNC - Construction						
	Business Administration and Law	Foundation Degree - Business					
Foundation Degree - Business and Creative Enterprise							
Foundation Degree - Business Management							
Level 4 - Accounting AAT Technician (Association of Accounting Technicians)							
Level 4 - Business Administration							
Level 4 - CIMA Advanced Diploma							
Level 4 - Management - NVQ							
Level 5 - CIMA Advanced Diploma							
Level 4 - CIMA Certificate in Management Accountancy							
Level 6 - ILEX Higher Diploma in Law							
Professional Diploma - Marketing CIM							
Professional Certificate - Marketing							
Graduate Diploma - Purchasing and Supply - CIPS (Foundation / Professional)							
Diploma - Management - CMI (Chartered Management Institute)							
HND - Business							
HND - Business and Management							
HND - Business and Finance							
HND - Business and Human Resource Management							
HND - Business and Law							
HND - Business and Marketing							
HND - Conversion - Business							
Certificate - Management - CMI (Chartered Management Institute)							
HNC - Business							
HNC - Business and Finance							
HNC - Business and Human Resource Management							
HNC - Business and Law							
HNC - Business and Marketing							
Access - to Business							
Computing	Foundation Degree - Computing						
	Foundation Degree - Computing Systems Management (HP certified professional)						
	HND - Computing						
	HNC - Computing						
Access - to Computing							



CHARLOTTE'S STORY

I joined the college following the Apprenticeship route in Administration and have now progressed onto HNC Business Management. I find I am learning new things all the time and have enjoyed my time here. After I have completed the HNC, I plan to progress to the HND course and will then go to university and top up my HND to a degree. The qualifications I plan to achieve will give me many options for a career route.



JESS' STORY

I studied A levels at a Black Country college then progressed onto Aston University and achieved a BSc (Hons) in Applied and Human Biology. Following University I worked for the Forensic Science Service for a year before embarking on World Travel. I am now studying for a PhD researching the molecular epidemiology of MRSA. I also appeared in the BBC series "Grime Scene Investigation". Following completion of my PhD I would like to continue in the field of Microbial Research and academic lecturing.

EVERTON'S STORY

I am an international student, originally from Jamaica and I came to England to pursue my educational goals. After achieving NVQ Levels 1-3 in Catering, I began studying for a HND in Hospitality Management at a Black Country college. The course covers a range of challenging elements, including a 14 week work placement which has given me the opportunity to develop my skills in a real workplace. I have enjoyed studying at the college which has a welcoming and friendly atmosphere, along with an excellent range of facilities to aid my studies.



MITZI'S STORY

About three years ago I began to feel unfulfilled in my sales role so I started looking for other jobs, but found that everything I was interested in required either experience or a qualification. I had no inclination to go back to college, particularly at my age, but I spoke to a careers advisor who was very helpful and directed me towards a HNC in Business.

I am now in my final year and am looking to further my studies by 'topping up' to Degree level. I feel my experiences at the college have set me up well for a working life and will hold me in good stead to achieve my career goals.



SARA'S STORY

I studied at a Black Country college in HNC Construction & the Built Environment. My career to date is with Thomas Vale Construction as an Assistant Materials Buyer in the Strategic Projects Division, specialising in Design and Build work. I liaise with design professionals, site staff and suppliers in order to procure materials for sites for delivery on time, within budget and to specification. The HNC at the college offers a variety of skills and the tutors are knowledgeable and enthusiastic about the construction industry.

When I read about the course I was intrigued and because the course was so varied, my options are now a lot greater than I first thought. It had been a while since I had studied but to be able to pick and chose your career you do need qualifications and this course has really brought out my potential.



JASBIR'S STORY

I chose the college purely because it was my local college, but now it is quite dear to me. I feel the college is underestimated as the staff, students and facilities are excellent. I am now in my first year of the HND and do not regret my decision to do my HE qualification at college. I feel settled here I am familiar with staff and I have progressed with my friends. The college was also a more cost effective alternative to university, they provided me with a lot of help and advice, making my decision easier. As an added bonus I can transfer to the final year of a degree course, so I will have two HE qualifications when I finish my studies. HE students also have their own dedicated centre which makes us feel appreciated and allows for more concentrated study.

WILL'S STORY

I studied a BTEC Construction Diploma at a Black Country College then progressed onto Loughborough University and achieved a Civil Engineering First Class Honours Degree. Now working at British Waterways, I started as a Project Engineer, became Senior Project Engineer and I am now Head of Computer Engineering.

It's thanks to the college that I have been able to achieve my educational qualifications. The staff helped me develop strategies to deal with my dyslexia and I have been able to continue my studies. I am now qualified as a Chartered Engineer which will enable me to further develop my career.



HE STUDY OPTIONS

NATIONAL VOCATIONAL QUALIFICATIONS

NVQs are work based qualifications that enable you to combine learning with employment. A level 4 NVQ is equivalent to other undergraduate higher education qualifications and usually require you to be in a job that includes management of people, finances or resources.

Entry to level 4 NVQs requires the possession of level 3 qualifications in the relevant sector.

HE CERTIFICATES AND DIPLOMAS

HE certificates and diplomas can be academic or vocational qualifications. You can study a subject that's new to you, or choose a subject that builds on the knowledge and skills you have gained through previous qualifications or employment. They are appropriate for people working as higher grade technicians, professionals or managers.

See Foundation Degree entry requirements

HNC / HND

Higher National Certificates (HNCs) and Diplomas (HNDs) are often studied part-time with HNCs allowing entry into the 2nd year of an honours degree and HNDs allowing entry at 2nd or 3rd year.

Candidates should have achieved a BTEC National Certificate, Diploma or an Advanced GNVQ in an appropriate subject area. Mature students with appropriate industrial experience will also be considered. Applicants will usually need to attend an interview with the course tutor before enrolling.

PROFESSIONAL QUALIFICATIONS

Professional qualifications are sector specific qualifications accredited by professional bodies and can be studied at levels 4, 5 and 6. They include: Chartered Institute of Marketing; Chartered Institute of Purchasing and Supply; and Chartered Institute of Personnel and Development.

Level 3 learners with appropriate qualifications will need to be employed in the relevant sector and apply for membership of the professional body upon enrolment.

FOUNDATION DEGREES

Foundation Degrees (FDs) are employment related qualifications, integrating academic and work based learning, taking between 2 and 4 years, depending on full or part time study. They are available to you if you're working, unemployed or considering a career change. FDs offer excellent progression options including the opportunity to move on to the final year of an honours degree or move to other work based leaning qualifications.

To gain entry on a Foundation Degree, applicants are required to have achieved a level 3 qualification which could include a BTEC National Diploma or Certificate, or a NVQ in a relevant vocational area or A Levels.

ACCESS PROGRAMMES

The main aim of Access programmes is to prepare adult learners from non-traditional backgrounds and under-represented groups for admission to undergraduate education. A significant number of students entering Higher Education now do so from Access programmes - so it's never too late to consider higher education as a route to career progression.

BA HONOURS DEGREE

To enter an Honours Degree programme, students are required to have achieved a full level 3 qualification such as, a BTEC National Diploma or Certificate at Merit or Distinction level, or an appropriate Foundation Degree or 2 or more A2 levels. Mature students who have achieved an Access to HE programme may also be suitable candidates.

